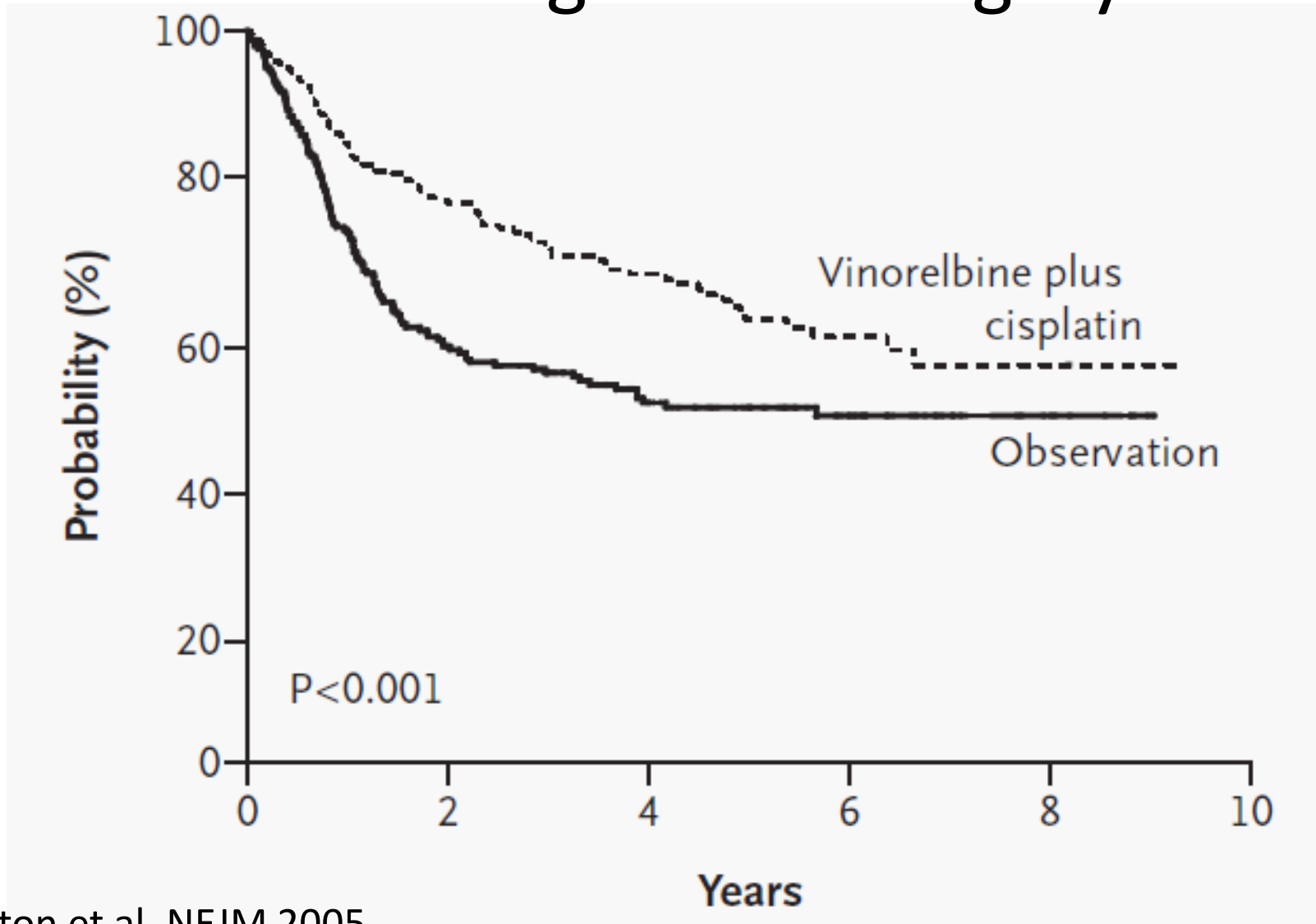


An aerial photograph of a large hospital complex. The central focus is a large, multi-story brick building with a complex, angular design. To the left, there is a red and white striped tower. The hospital is surrounded by numerous parking lots filled with cars. In the background, there are several smaller buildings and a large green field with a red track. The entire scene is set against a backdrop of dense green trees and a clear sky.

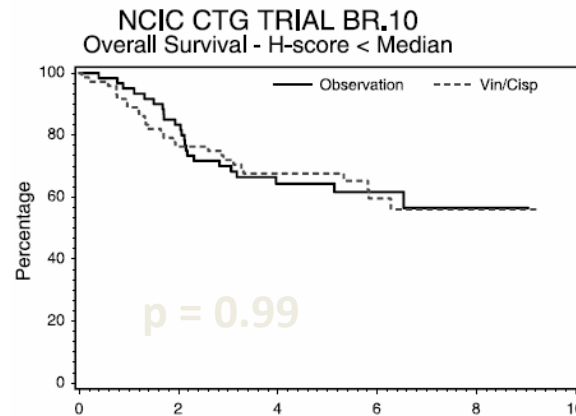
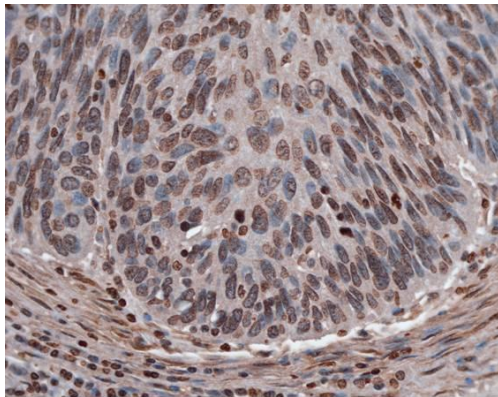
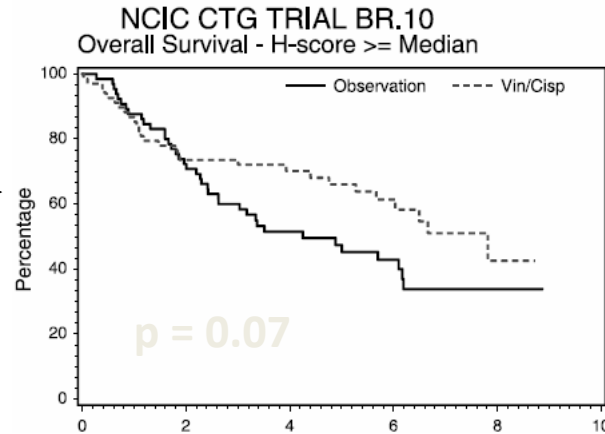
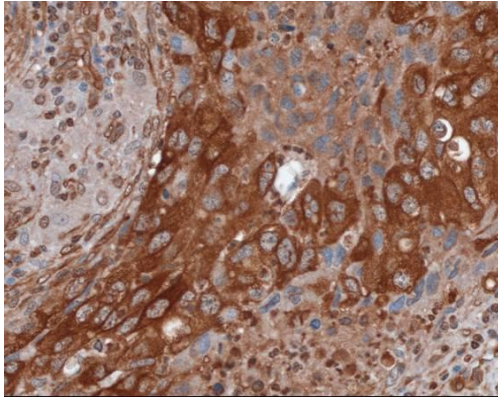
# Innovative cancer clinical trials

**Tony Reiman**  
**MLA breakfast**  
**April 26, 2017**

# Chemotherapy increases cure rates after lung cancer surgery



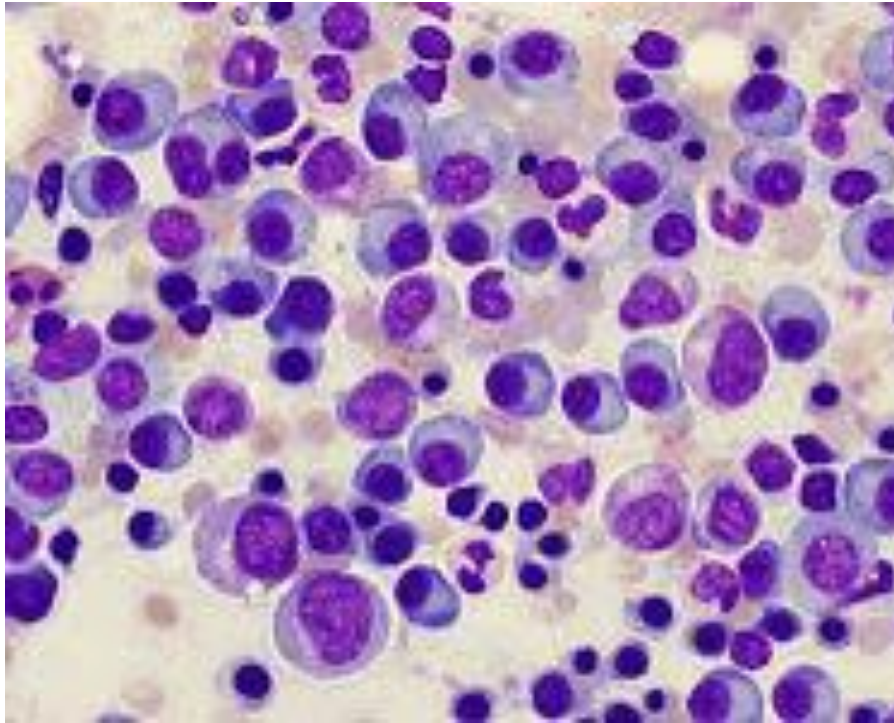
# Who benefits from chemotherapy?



## Cross-validation study of class III beta-tubulin as a predictive marker for benefit from adjuvant chemotherapy in resected non-small-cell lung cancer: analysis of four randomized trials

T. Reiman<sup>1\*</sup>, R. Lai<sup>2</sup>, A. S. Veillard<sup>3</sup>, E. Paris<sup>3</sup>, J. C. Soria<sup>4</sup>, R. Rosell<sup>5</sup>, M. Taroni<sup>5</sup>, S. Graziano<sup>6</sup>, R. Kratzke<sup>7</sup>, L. Seymour<sup>8</sup>, F. A. Shepherd<sup>9</sup>, J. P. Pignon<sup>3†</sup> & P. Sève<sup>10†</sup> for the LACE-Bio Group

# Multiple myeloma



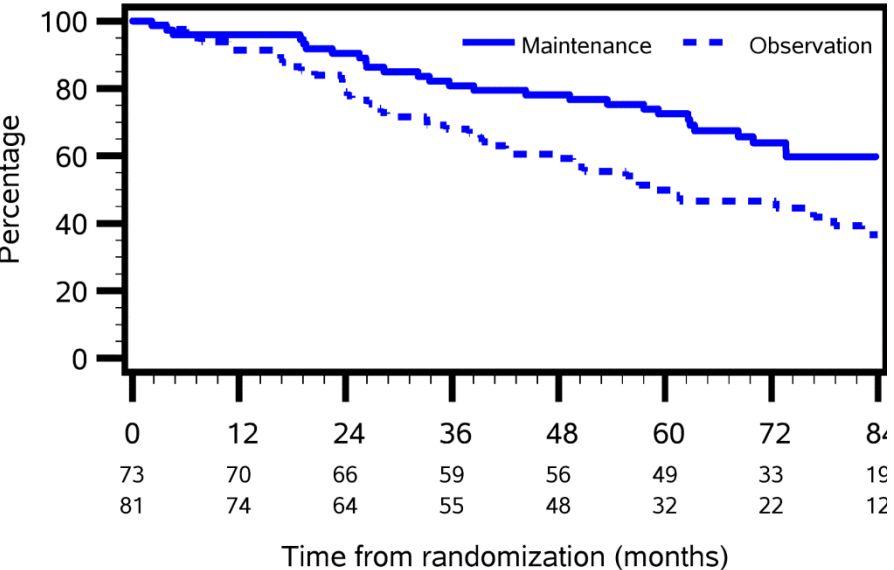
# A pharmacogenetic analysis of the Canadian Cancer Trials Group MY.10 clinical trial of maintenance therapy for multiple myeloma

Ming Han,<sup>1</sup> Alli Murugesan,<sup>1</sup> Nizar J. Bahlis,<sup>2</sup> Kevin Song,<sup>3</sup> Darrell White,<sup>4</sup> Christine Chen,<sup>5</sup> Matthew D. Seftel,<sup>5</sup> Kang Howsen-Jan,<sup>6</sup> Donna Reece,<sup>7</sup> Keith Stewart,<sup>8</sup> Yagang Xie,<sup>9</sup> Annette E. Hay,<sup>10</sup> Lois Shepherd,<sup>11</sup> Marina Djurfeldt,<sup>11</sup> Liting Zhu,<sup>11</sup> Ralph M. Meyer,<sup>12</sup> Bingshu E. Chen,<sup>11</sup> and Tony Reiman<sup>1,13</sup>

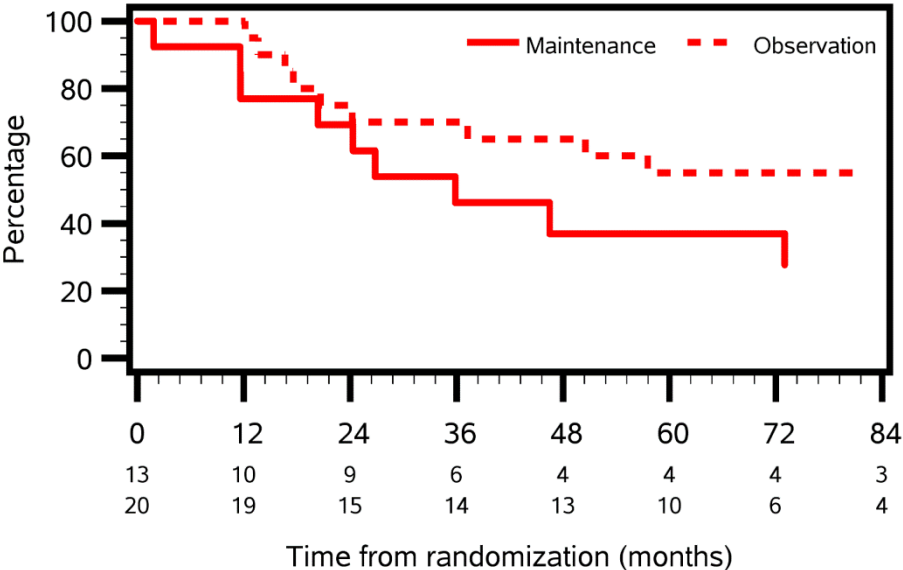
BLOOD, 4 AUGUST 2016 • VOLUME 128, NUMBER 5

## ICAM1

Overall Survival by Treatment



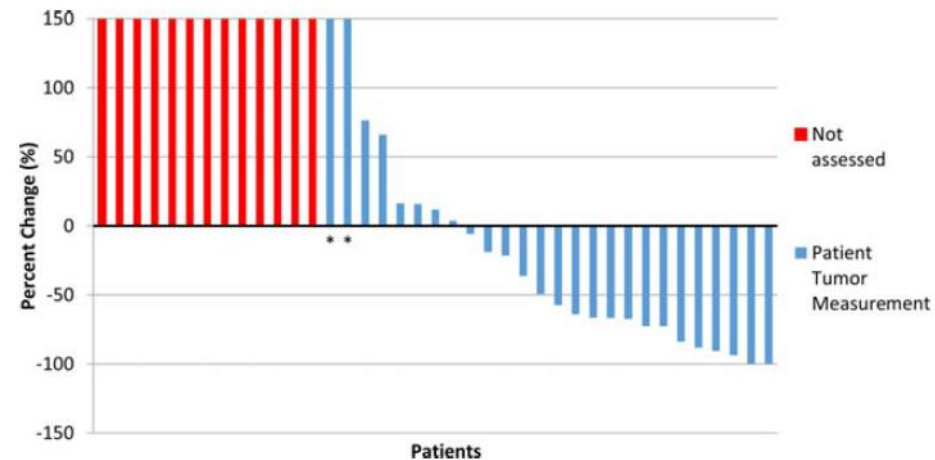
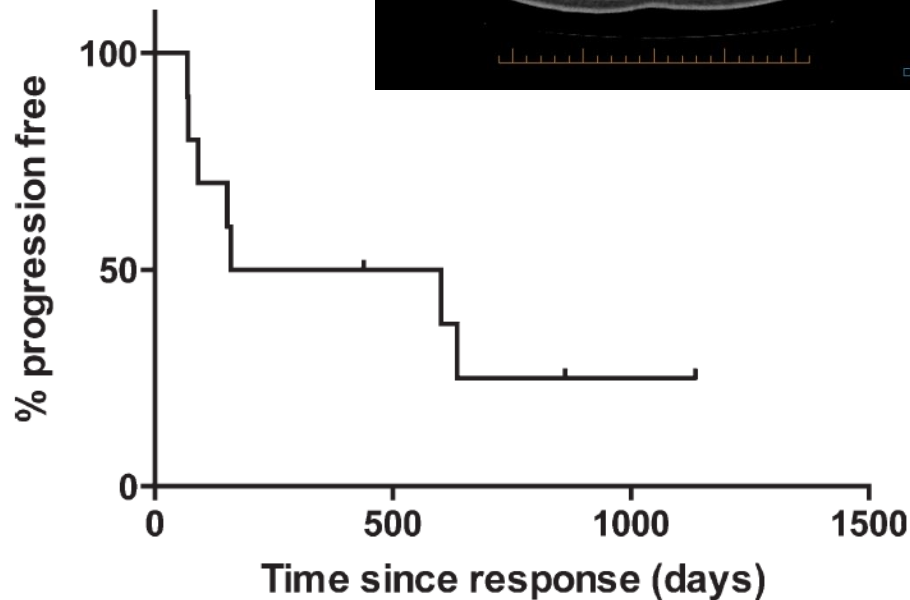
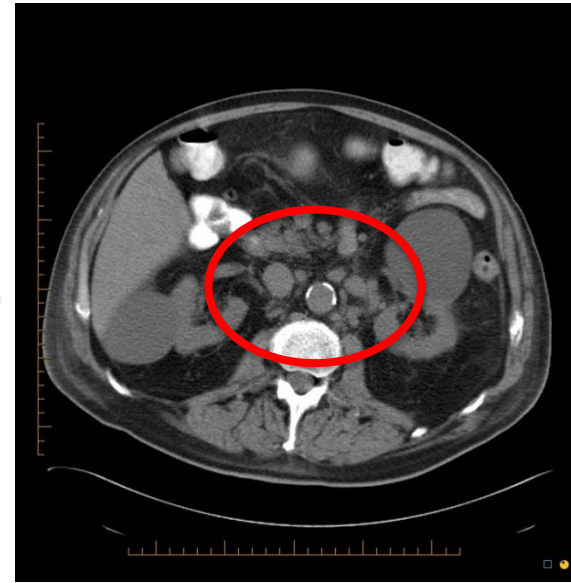
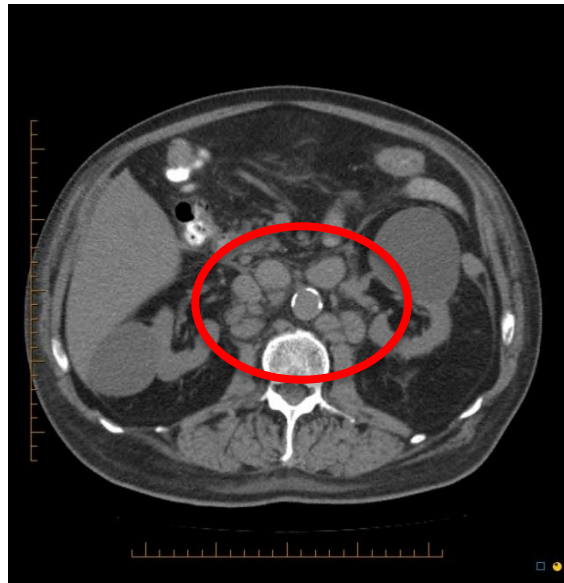
Overall Survival by Treatment



# Final Report of a Phase 2 Clinical Trial of Lenalidomide Monotherapy for Patients With T-Cell Lymphoma

Ethan Toumishey BSc<sup>1</sup>; Angeli Prasad, CCRP<sup>2</sup>; Greg Dueck, MD, MSc<sup>3</sup>; Neil Chua, MD<sup>2</sup>; Daygen Finch, MD<sup>3</sup>; James Johnston, MD<sup>4</sup>; Richard van der Jagt, MD<sup>5</sup>; Doug Stewart, MD<sup>6</sup>; Darrell White, MD<sup>7</sup>; Andrew Belch, MD<sup>2</sup>; and Tony Reiman, MD<sup>1,8</sup>

Cancer March 1, 2015





**Dalhousie Medicine  
New Brunswick**



# **TFRI Pan-Canadian Multiple Myeloma Molecular Monitoring (M4) Study**



The Terry Fox Research Institute  
L'Institut de recherche Terry Fox

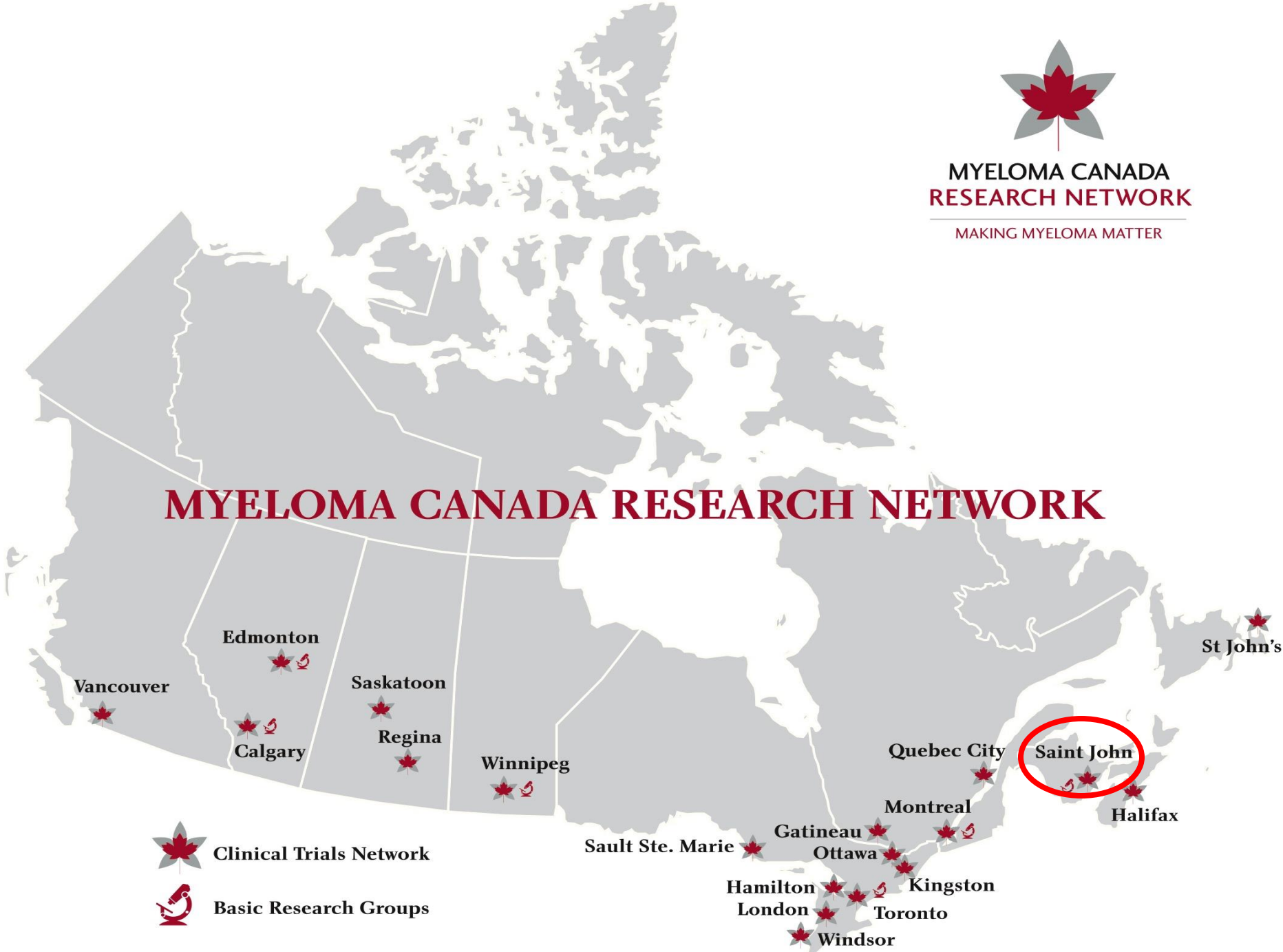




**MYELOMA CANADA  
RESEARCH NETWORK**

MAKING MYELOMA MATTER

# MYELOMA CANADA RESEARCH NETWORK



Clinical Trials Network

Basic Research Groups

Vancouver

Edmonton

Calgary

Saskatoon

Regina

Winnipeg

Sault Ste. Marie

Hamilton

London

Gatineau  
Ottawa

Montreal

Quebec City

Kingston

Toronto

Windsor

Saint John's

Halifax

St John's

# CIHR SPOR Mentorship Chair in Innovative Cancer Clinical Trials



New Brunswick  
Health Research  
Foundation



Knowledge Growth Innovation

Fondation de la  
recherche en santé  
du Nouveau-Brunswick

Savoir Avancement Innovation

Dr. Alli Murugesan  
Ali Manashty  
Dr. Bryn Robinson  
Sarah Campbell-McNamara  
Bithika Ray  
Jane Agar  
Sharon Turnell  
Kelly McCain  
Jennifer O'Leary  
Kathy Heath  
Pam McDougall  
Stephanie Melanson  
Rene Aleman  
Lester Perez  
Dasse Natarajdan  
Sara Tennant

Dr. Stacy Grieve  
Ming Han  
Ayush Ray  
Lauren Andrew  
Mat Finniss  
Eric Manuel  
Elise Vaillancourt  
Rene Boudreau  
Andy Hong  
Dr. Ashley DiPasquale  
Dr. Ethan Toumishey  
Dr. Jonathan Moore  
Dr. Phil Tremblay  
Kat Sarty  
Miranda Lees  
Minji Kim

New Brunswick  
Health Research  
Foundation



Knowledge Growth Innovation

Fondation de la  
recherche en santé  
du Nouveau-Brunswick

Savoir Avancement Innovation

FI **NB** IF  
**INNOVATION**



The Terry Fox Foundation



BEATRICE HUNTER  
Cancer Research Institute

Evolving Cancer Research in Atlantic Canada



**Dalhousie Medicine**  
**New Brunswick**



**CIHR IRSC**

Canadian Institutes of  
Health Research    Instituts de recherche  
en santé du Canada

INNOVATIVE  
MEDICINES  
CANADA



MÉDICAMENTS  
NOVATEURS  
CANADA



**Canadian  
Cancer  
Society**



Canadian Cancer  
Trials Group

**INNOVATION.CA**

CANADA FOUNDATION  
FOR INNOVATION

FONDATION CANADIENNE  
POUR L'INNOVATION



RÉSEAU DE SANTÉ

**Horizon**  
HEALTH NETWORK