

New Brunswick
Health Research
Foundation



Fondation de la
recherche en santé
du Nouveau-Brunswick



5TH ANNUAL NEW BRUNSWICK HEALTH RESEARCH CONFERENCE



BRIDGING THE GAP

PRESENTED BY THE NEW BRUNSWICK HEALTH RESEARCH FOUNDATION
WITH THE UNIVERSITY OF NEW BRUNSWICK SAINT JOHN

NOVEMBER 14 & 15, 2013

TRADE AND CONVENTION CENTRE | SAINT JOHN | NEW BRUNSWICK



CONFERENCE SPONSORS

UNB Saint John and NBHRF wish to acknowledge the support, through educational grants and/or sponsorships, of the following organizations, whose contributions helped make this event possible.

DIAMOND



PLATINUM



GOLD



Answers That Matter.

SILVER



BRONZE





Dear Conference Attendees:

Welcome to the beautiful City of Saint John, Canada's Renaissance City, for the 5th Annual NB Health Research Conference.

Investing in innovation and smart ideas is a key element of our government's plan to create jobs in New Brunswick communities and rebuild the economy. "Bridging the Gap" is a goal our government is focused on working achieving with the many partners who drive New Brunswick's knowledge economy. Building on these partnerships is a cornerstone of our government's Innovation Agenda, which will strategically direct more than 80 million dollars in investments over the next five years.

Our plan seeks to harness and mobilize knowledge and expertise across all sectors of our society to move our province forward. We are fortunate that so many world-class researchers, professionals and entrepreneurs call New Brunswick home, and this program provides an opportunity to celebrate many of their successes. As a government, and as a province, we are looking for new ways to empower these tremendous individuals to pursue opportunities for growth, job creation, and prosperity in New Brunswick.

In our health care system, we have important challenges but even greater opportunities for our research community to inform decision-making to improve health care delivery and deliver the best possible outcomes for our patients and citizens. This program gives us a great platform to align our efforts in pursuit of this goal.

I would like to thank the New Brunswick Health Research Foundation and their many partners in the research community for the tremendous amount of work they've accomplished and the leadership they've shown over the last year. Together, we have made great strides to "Bridge the Gap" in health research in our province and I'm confident we will make many more in the year to come.

This conference will provide participants with an appreciation of the quality research currently happening in our province and its potential to impact the daily lives of citizens across our province, and indeed the world.

I wish you many thoughtful debates, ground breaking eureka moments and most importantly, opportunities for new partnerships.

Honourable David Alward
Premier



Welcome Comments



Dr. Rodney Ouellette

Chair, NBHRF

On behalf of the Board of Directors of the New Brunswick Health Research Foundation, it is my pleasure to welcome you to our 2013 Annual Conference. This conference has become the premier event to showcase the excellent health research that is conducted in the province and the ideal venue to network and discuss future directions with the greater research community as we continue to grow together this important R&D sector. It also a great opportunity for students and trainees to interact with more established health researchers as this will help develop the next generation of leaders in this field. It is our wish that this event be a catalyst for new ideas and collaborations for the success of health research in New Brunswick.

It is a promising time for health research with increasing opportunities at many levels. The province of New Brunswick has launched an ambitious innovation agenda and is looking to organizations like NBHRF to deliver on increasing funding for projects, teams and personnel. Our Board of Directors and Leadership Team are confident that by engaging and supporting our researchers we will rise to the challenge and continue to conduct world class research which will impact human health and benefit our province.

I would like to thank the team of NBHRF under the leadership of CEO, Dr. Bruno Battistini who worked diligently to the organization of this event. Special thank you to the Advisory Committee, Roberta Clark, Stephen Lewis, Chris Gray, Shelley Doucet, Barry Strack, Tony Reiman, Joan Creighton who did a tremendous job to develop the scientific program for this year's meeting. The program is of high quality and encompasses many of the key areas of research activity occurring in the province. It is our wish that you will find collaborators and innovative ideas with other attendees at the conference. The Foundation hopes that the links created here will grow stronger and researchers will provide feedback and advice to grow the event for future years. We encourage all participants to visit the NBHRF website and stay connected via Twitter to get the latest updates on announcements and programs as well as building a connected researcher network.

Thank you for participating and helping to build the future of New Brunswick Health Research. Enjoy the conference!



Welcome Comments



Dr. Bruno Battistini

CEO, NBHRF

Dear Colleagues, Stakeholders and Distinguished Guests

The theme of this 5th Annual New Brunswick Health Research Conference - "Bridging The Gap" is reflected in a multidisciplinary program including basic and clinical health research and science, patient-oriented research, and focusing on key strategic initiatives such as aging, adolescent and youth mental health, and community-based primary health care, three of the major initiatives on which New Brunswick researchers have embarked over the past 12 months.

This conference enables our researchers to present their research, as well as provides students and trainees the opportunity to do the same and have their presentations evaluated. This year, for the first time, we welcome the Gairdner Keynote Speaker, thanks to the lead of Dr. John Steeves at Dalhousie Medicine New Brunswick. We also welcome clusters of health/medical/life sciences from other regions of Canada and the U.S., to learn about their recipes for success. New Brunswick is part of a larger global community of researchers, patients and charitable and institutional funders which gives us the opportunity to learn from them, work with them and join them, aligning priorities and interest in creating the best quality of health care here at home.

Our first Gala of Excellence, showcasing "The Ones-to-Watch" for the (young new investigator) New Brunswick health researcher of the year distinction, takes place this year. Once-a-month, a member of this elite group was featured in the print media. It is time to honor them and select the annual recipient. This activity will become a yearly event. Another recurring session will be the "State of the Foundation Address", a time allocated to reflect on the past year at NBHRF (annual impact report) as well as ongoing activities, and direction for the future.

As we are all aware, the health research enterprise is a key component in the development of better health care in New Brunswick and a sustainable economy.

Thank you to the Local Organizing Committee, thank you to our dedicated NBHRF staff, thank you to our Sponsors. Welcome back to all of you, welcome to our new participants. We wish you great interactions in an upbeat and collaborative environment.



DAY 1

Thursday, November 14, 2013

<p>0730 - 0845 Foyer</p>	<p>REGISTRATION</p>
<p>0845 - 0900 Marco Polo Room</p>	<p>OPENING REMARKS Dr. Rodney Ouellette, Chair of NBHRF Board of Directors, and President & Scientific Director of ACRI Professor Roberta Clark, Associate Professor, Department of Nursing & Health Sciences and Assistant Dean of Health Research & Partnerships, UNB Saint John Dr. Robert MacKinnon, Vice President, UNB Saint John</p>
<p>0900 - 0945 Marco Polo Room</p>	<p>STATE OF THE FOUNDATION ADDRESS</p> <div data-bbox="397 625 568 819" data-label="Image"> </div> <div data-bbox="592 646 812 735" data-label="Text"> <p>Dr. Bruno Battistini Chief Executive Officer, NBHRF</p> </div> <div data-bbox="933 655 1117 724" data-label="Text"> <p>New Brunswick Health Research Foundation</p> </div> <div data-bbox="1133 651 1209 730" data-label="Image"> </div> <div data-bbox="1230 655 1502 724" data-label="Text"> <p>Fondation de la recherche en santé du Nouveau-Brunswick</p> </div> <div data-bbox="389 844 540 877" data-label="Section-Header"> <p>Abstract</p> </div> <div data-bbox="589 840 1502 987" data-label="Text"> <p>Each and every year, NBHRF CEO will present and release the previous fiscal year "Annual Impact Report" profiling the activities and vitality of the health research enterprise in New Brunswick. The "State of the Foundation Address" will also showcase ongoing and future programming proposed in its five year strategic investment plan (2013-2018) that are planned to energize health research and innovation in our province, contributing to a significant growth of the knowledge economy.</p> </div>
<p>0945 - 1030 Marco Polo Room</p>	<p>PLENARY SESSION #1 – INTERDISCIPLINARY RESEARCH</p> <p>Keynote Speaker:</p> <div data-bbox="397 1123 568 1318" data-label="Image"> </div> <div data-bbox="446 1318 568 1339" data-label="Caption"> <p>Photo: David Howells</p> </div> <div data-bbox="592 1123 1234 1192" data-label="Text"> <p>Community-engaged, interdisciplinary Health Research: Assembling the team and working together</p> </div> <div data-bbox="592 1192 1193 1318" data-label="Text"> <p>Dr. Barbara Neis University Research Professor and Senior Research Associate, SafetyNet Centre for Research in Occupational Health and Safety, Memorial University, St. John's, NL.</p> </div> <div data-bbox="1274 1186 1453 1302" data-label="Image"> </div> <div data-bbox="389 1348 565 1381" data-label="Section-Header"> <p>Biography</p> </div> <div data-bbox="589 1339 1550 1570" data-label="Text"> <p>Barbara Neis (Ph.D.) is a University Research Professor in the Department of Sociology and Co-founder and Senior Research Associate in the SafetyNet Centre for Occupational Health and Safety Research at Memorial University. Professor Neis is also the President (2012-14) of the Canadian Association for Research on Work and Health, a member of the Core Group on Ocean science in Canada for the Council of Canadian Academies Ocean Science Project, and the founder of the Fishing for the Future Film Festival. She was a Trudeau Foundation Fellow between 2006 and 2009. She received the President's Award for Outstanding Research at Memorial University and is a former member of SSHRC Council. Professor Neis received her Ph.D. in Sociology from the University of Toronto in 1988. Her research focuses broadly on interactions between work, environment, health and communities in rural and remote contexts.</p> </div> <div data-bbox="389 1591 540 1625" data-label="Section-Header"> <p>Abstract</p> </div> <div data-bbox="589 1591 1550 1738" data-label="Text"> <p>This presentation will discuss some of the opportunities and challenges associated with developing and carrying out community-engaged, interdisciplinary health research in Atlantic Canada. Drawing on examples from the field of occupational and population health research in rural and resource dependent contexts, I will look at some strategies for collaboratively identifying health-related problems that require research, building the team, developing the research design and carrying the community collaborative research program through to completion.</p> </div>
<p>1030 - 1100</p>	<p>NUTRITION BREAK, POSTER VIEWING & JUDGING</p>



DAY 1 – Thursday, November 14, 2013 – continued

1100 - 1200
Marco Polo
Room

PLENARY SESSION #2 – ADVANCING THE DEVELOPMENT AND COMMERCIALIZATION OF CANADIAN HEALTH RESEARCH

Moderator: Dr. Bruno Battistini, Chief Executive Officer, NBHRF

Keynote Speakers:



CQDM – Québec Consortium for Drug Discovery

Dr. Diane Gosselin

President and Chief Executive Officer



Biography

Diane Gosselin (Ph.D., MBA), President and CEO of CQDM, joined the organization in 2008 as Vice President, Research and Business Development. She has twenty years of experience in research and corporate financing, namely at the Fonds de solidarité FTQ where she helped several companies implement their drug development strategy and was actively involved in the elaboration of a strategic initiative aimed at promoting innovation in the life sciences sector. Mrs. Gosselin holds a Ph.D. in microbiology and immunology from the Université de Montréal, as well as an Executive MBA from the Université du Québec à Montréal and the Université Paris-Dauphine.

Abstract

The CQDM is a consortium whose primary mission is to fund biopharmaceutical research projects. The goal of this innovative Canadian initiative is to accelerate the process of discovering safer and more effective drugs. Based on a unique partnership model between the university and hospital communities in the public sector and the pharmaceutical and biotechnology industries in the private sector, the CQDM puts the needs of the pharmaceutical industry at the very centre of its concerns.



CDRD – Centre for Drug Research and Development

Dr. John E. Coleman

Ph.D UBC 1997 and B.Sc. (Honours) Bishops 1992
Head, Project Search and Evaluation



Biography

John E. Coleman (Ph.D.) is the Head of the Project Search and Evaluation group at CDRD. Prior to joining CDRD in 2007, he worked at Inflagme Pharmaceuticals Ltd. Following his Ph.D., he worked in Halifax at the National Research Council's Institute for Marine Biosciences and at Ocean Nutrition Canada. He is an inventor on 3 patents and the author on 11 publications and his Ph.D. research on anticancer compounds produced the drug candidate HTI-286, which was licensed to Wyeth and progressed to Phase II clinical trials.

Abstract

The Centre for Drug Research and Development (CDRD) is Canada's fully-integrated national drug development and commercialization centre, providing expertise and infrastructure to enable researchers from leading health research institutions to advance promising early-stage drug candidates. Its mandate is to "de-risk" discoveries stemming from publicly-funded health research and transform them into viable investment opportunities for the private sector, thus successfully bridging the commercialization gap between academia and industry, and translating research discoveries into new therapies for patients. Canada's Networks of Centres of Excellence Program has recognized CDRD as a Centre of Excellence for Commercialization and Research (CECR).

1200 - 1315
Loyalist Room

BUFFET LUNCH – 2013 GAIRDNER LECTURE

Moderator: Dr. John Steeves, Associate Dean, DMNB

Speaker:



Genetics and the Future of Medicine

Dr. Roderick R. McInnes

Director of Research, Lady Davis Institute for Medical Research
at the Jewish General Hospital, Alva Chair in Human Genetics,
Professor of Human Genetics & Biochemistry McGill University, Montreal





DAY 1 – Thursday, November 14, 2013 – continued

Biography

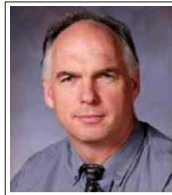
Roderick R. McInnes (M.D., Ph.D.) is the Director of the Lady Davis Institute of the Jewish General Hospital at McGill University, where he is also the Alva Chair in Human Genetics, Canada Research Chair in Neurogenetics, Professor of Human Genetics and Professor of Biochemistry. He has made important contributions to the understanding of the molecular basis of retinal and eye development, and to the identification of genes and processes associated with inherited retinal degenerations. Recently, he and collaborators demonstrated that it is possible to correct an inherited learning defect in mice with a drug, a finding with important implications for human learning disability. He is a coauthor of the 5th, 6th and 7th editions of the textbook Thompson and Thompson: Genetics in Medicine. He is also a Fellow of the Royal Society of Canada and the Canadian Academy of Health Sciences. He was appointed to the Order of Ontario in 2008, and made a member of the Order of Canada in 2009. In 2010, he was the President of the American Society of Human Genetics. He is in his 6th year as a member of the Medical Advisory Board of the Gairdner Foundation.

1315 - 1445
Montagu 2 & 3

**CONCURRENT SESSION – WORKSHOP #1:
SUCCESSFUL HEALTH AND LIFE SCIENCE CLUSTERS**

Moderator: Mr. Allan Gates, Communication Advisor, Health + Life Science New Brunswick

Speakers:



Prince Edward Island BioAlliance

Mr. Rory Francis
Executive Director,
Prince Edward Island BioAlliance



Biography

Rory Francis is a native of Prince Edward Island. He earned a B.Sc. in geology and chemistry from Mount Allison University and an M.Sc. in Hydrogeology from the University of Waterloo. Since 2004, he has been the Executive Director of the Prince Edward Island BioAlliance, a not-for-profit network of bioscience businesses, academic and research organizations, and government agencies. The role of the BioAlliance is to facilitate the growth and development of the province's bioscience cluster, working with industry, researchers, and government partners to establish the next generation of the Prince Edward Island economy. From 1991 to 2004, Mr. Francis held Deputy Minister positions in several provincial government departments, including Environment; Agriculture and Forestry; Fisheries and Aquaculture; and Health and Social Services.

Abstract

The Prince Edward Island BioAlliance is a private sector-led partnership of businesses, research and academic institutions, and government agencies dedicated to building the province's bioscience sector. Through a unique and successful Cluster model, we have established the enabling conditions for business success. It's focus is the research, development and commercialization of bioactive-based products for human, animal, and fish health and nutrition. The Cluster includes 38 bioscience companies, eight research institutions, and federal and provincial government partners. Private sector revenues exceed \$100 million, and annual R&D expenditures are more than \$70 million. Revenue sources include human, animal, and fish health and nutrition products including cosmetic ingredients, natural health products, feed additives, vaccines, diagnostics, and pharmaceuticals. It's vision is to be the location of choice for companies engaged in the research, development, and commercialization of bioactives-based human and animal health and nutrition products.



Buffalo/Niagara Medical Campus Inc.

Mr. Patrick J. Whalen
Chief Operating Officer
Helping Make Dreams Come True



Biography

Patrick Whalen joined the Buffalo Niagara Medical Campus, Inc. (BNMC) as Chief Operating Officer in March of 2008. In addition to managing the BNMC day-to-day operations, Pat is the BNMC's unofficial "entrepreneur-in-residence." As such, Pat works to foster collaboration and job creation on campus and throughout the bi-national region. Pat also works to attract dynamic companies and people from around the world to the BNMC, especially to the Thomas R Beecher Jr. Innovation Center (TRBIC). He is a member of the Board of Directors for the World Trade Center Buffalo Niagara, Canadian American Border Trade Alliance, and Continental 1. Pat makes his expertise available to TRBIC tenant companies as well as other early stage companies. He is a graduate of the University at Buffalo's School of Management Center for Entrepreneurial Leadership and attended Canisius College.



DAY 1 – Thursday, November 14, 2013 – continued

Abstract

The Buffalo Niagara Medical Campus is a consortium of the region's premier health care, life sciences research, and medical education institutions, all located on 120 acres in downtown Buffalo, New York. The BNMC is dedicated to the cultivation of a world-class medical campus for clinical care, research, education, and entrepreneurship. We coordinate activities related to planning, development and enhancement of our 120-acre space, facilitate collaboration among our member institutions and the community, and work to create a distinct environment that provides opportunities for active and healthy living.



Laval Bioscience Cluster

Dr. Jean-Marc Juteau

Director, The Biotech City,
Laval, QC



Biography

Jean-Marc Juteau (Ph.D.) is Director of the Biotech City in Laval, Quebec. He is also an associate professor at the Université du Québec à Trois-Rivières and chairman of the board of the company Abnatura. Previously he was CEO, senior VP and co-founder of Replicor, a spin-off from McGill University. He has held administrative positions at McGill and in the company Isotech Design. Dr. Juteau has postdoctoral training at INRS and IRCM, a M.Sc. in Microbiology from the Université de Montréal and a Ph.D. in Microbiology from the Université Laval.

Abstract

The Biotech City is the cluster of biotechnology and life sciences of the Metropolitan Montreal. It is located in the City of Laval and includes more 80 companies and institutes employing 5,000 individuals and operating within a 4-km radius. The cluster comprises companies in the fields of biotechnology, pharmaceutical, medical device, CRO and IT. The Biotech City includes also a vertically integrated industrial park dedicated to life sciences where can be found two research institutes, an incubator, laboratory space for rent and land for development. The Biotech City is conveniently located close to Montreal and the International Airport, and is served by the subway.

1315 - 1445
Marco Polo
Room

**CONCURRENT SESSION – WORKSHOP #2:
SPOR AND OTHER STRATEGIC ACTIVITIES**

Moderator: Dr. Kuan Li, CIHR Project Lead, SPOR

Speakers:



Maritime SPOR Support Unit (MSSU)

Dr. Ted McDonald

Professor, Department of Economics, UNB
Academic Director of the NB Research Data Centre
Co-director of the NB Institute for Research, Data and Training
Member of the executive committee of the MSSU



Biography

Ted McDonald (Ph.D.) is a Professor of Economics at the University of New Brunswick in Fredericton. He holds a Ph.D. and a Master of Commerce in Economics from the University of Melbourne. Dr. McDonald was designated a UNB Research Scholar for 2012-2014 and has been PI or co-PI on over \$1.5 million of research funding since 2009. He is the Academic Director of the NB Research Data Centre, the co-director of the NB Institute for Research, Data and Training, and member of the executive committee of the MSSU as well as the Chair of the MSSU data and privacy committee.

Abstract

The Maritime SPOR Support Unit (MSSU), responding to a call for business case applications from CIHR for the first of their programs to support patient oriented research (SPOR), a multidisciplinary team made up of researchers, government officers and patient advocates from Nova Scotia, New Brunswick and PEI prepared and submitted an ambitious plan to establish the Maritime SPOR Support Unit (MSSU). The business plan was approved by CIHR in late June, 2013, and work began immediately thereafter to establish the MSSU. This presentation will describe the structure of the MSSU, progress to date, some early successes, and ongoing work of the Unit and its members.



DAY 1 – Thursday, November 14, 2013 – continued

**SPOR-TRAM – Adolescent and Youth Mental Health –
A New Brunswick Application****Dr. Ann Beaton**Professor & Canada Research Chair (Tier 2),
Department of Psychology, Université de MonctonUNIVERSITÉ DE MONCTON
EDMUNDSTON MONCTON SHIPPAGAN**Biography**

Ann Beaton (Ph.D.) is a professor at the School of Psychology and the Canada Research Chair (CRC) Tier 2 on inter-group relations at the Université de Moncton. Her research program seeks to examine the dynamics of the relations between advantaged and disadvantaged groups. For instance, her work looks at how minority group members respond to social exclusion. Professor Beaton examines how intolerance and behaviour towards disadvantaged groups are expressed among members of advantaged groups. Dr. Beaton holds a PhD in experimental psychology from the University of Ottawa and did a post-doctoral training at the Centre for the Study of Group Processes at the University of Kent in Canterbury, U.K.

Abstract

The transformation of mental health services for adolescents points to the need for a complete revision of current policies, attitudes, and practices. The aim of this presentation is to provide an overview of an initiative designed to mobilize partners, namely young people, families, communities, service providers, community organizations, researchers, and decision makers in order to implement proven practices at the national level in the field of adolescent mental health.

**Aging, Alzheimer's and Dementia –
The Canadian Consortium on Neurodegeneration
and Aging (CCNA) – A New Brunswick Approach****Dr. Sarah Pakzad**Associate Professor and director of the Laboratory of
Cognitive Neuropsychology, Université de MonctonUNIVERSITÉ DE MONCTON
EDMUNDSTON MONCTON SHIPPAGAN**Biography**

Sarah Pakzad (C.L.H., Ph.D., L. Psych) is an Associate Professor and director of the Laboratory of Cognitive Neuropsychology at the Université de Moncton. She is also director of Atlantic Memory Clinic and Associate Professor with the Dept. of Psychiatry, Faculty of Medicine, Université de Sherbrooke since 2009.

Abstract

Under the CCNA Quality of Life Theme, our New Brunswick study examines a collaborative approach in primary care to enhance the care of dementia patients in New Brunswick. The importance of building capacity care for the management of dementia is urgent given that elderly with dementia symptoms are underdiagnosed, undertreated and over hospitalized (Sternberg et al., 2000; Feldman et al., 2008). Bergman (2009) proposed an action plan to meet the challenge of Alzheimer's disease and related disorders that highlights the role of primary care physicians in dementia care. These findings are particularly important and promising given the fact that there is a higher proportion of Canadian seniors aged 65 and over living in rural and remote areas compared to urban settings (Statistics Canada, 2007). This model is well adapted to the New Brunswick rural context.

**SPOR Foundations of Integrated Health Care
Innovations Network – An Atlantic Approach****Dr. Baukje (Bo) Miedema**Professor, Director of Research,
Dalhousie Family Practice Teaching UnitDALHOUSIE
UNIVERSITY
*Inspiring Minds***Biography**

Baukje (Bo) Miedema (Ph.D.) is Professor of Family Medicine and Director of Research at the Dalhousie University Family Medicine Teaching Unit (FMTU) in Fredericton and an Adjunct Professor at of the Sociology Department at the University of New Brunswick. She has trained as a general and psychiatric nurse in Holland before she earned her Ph.D. in Sociology at the University of New Brunswick. Over the last 15 years at the FMTU, she has developed a robust program of research in cancer survivorship including cancer follow-up care and rehabilitation issues and health services research. She has received provincial, regional and national grants (CIHR & SSHRC) as principal investigator and as co-investigator to support her research endeavors. She has published extensively with almost 60 peer reviewed papers and three books as an author or an editor. She is a non-physician member of the College of Family Physicians of Canada and has served as a member of the Section of Researchers of the College. She also serves as a reviewer for many national and international journals and granting agencies. In her spare time, she is President of the Board of Directors of the Multicultural Association of Fredericton (MCAF).



DAY 1 – Thursday, November 14, 2013 – continued

Abstract

The Canadian Institutes of Health Research (CIHR) have developed a new “signature initiative in community based primary health care.” This initiative consists of three streams. In this presentation, Dr. Miedema will briefly mention the three streams, and will discuss in greater detail the third stream called *the Strategic Patient Oriented Research (SPOR) Network in Integrated Primary Health Innovations*. This SPOR Network endeavors to create cooperation between researchers, policy makers and clinicians to identify and rapidly scale up best practices in primary care, specifically focusing on high health care system users with complex needs. The overall goal of this initiative is to improve primary care while at the same time be cost-effective. She will also discuss the progress of this initiative in New Brunswick.

1445 - 1515

NUTRITION BREAK, POSTER VIEWING & JUDGING

1515 - 1645

Marco Polo
Room

PLENARY SESSION #3 – ENGAGING PATIENTS, FAMILIES & COMMUNITY IN RESEARCH

Moderators: **Mr. Christian Whalen**, Chief Council, Office of the Child and Youth Advocate, GNB
Mr. John Boyne, Director, Accountability and Health Information Management,
Department of Health, GNB

Speakers:



Deep Survival: Who Lives, Who Dies And Why?

Ms. Maureen Bilerman

Executive Director, Dots NB



Biography

Maureen Bilerman is the Founder/Executive Director of Dots NB. She is the mother of a child with serious mental health challenges. Before becoming a mental health advocate, Maureen was a journalist with CBC Radio and a published writer. She also has a background in marketing and was the Regional Coordinator for an international citizen's lobby group called RESULTS.

Abstract

Dots NB is a charitable, non-profit organization committed to excellence in kids' mental health through youth, family and community empowerment. The organization is rooted in a ground breaking event held in Fredericton three years ago when Maureen Bilerman could not secure adequate treatment and services for her teenage daughter. Her call for support from community has helped to inspire a provincial grassroots' movement that is transforming stakeholder collaboration through public engagement. Leading this transformation is the youth of New Brunswick. From elementary school through to post-secondary and beyond, find out how our youngest citizens are growing the commitment toward more effective collaboration in the field of youth mental health in New Brunswick.



Integration of Research in Addressing Family and Community Needs

Ms. Chandra MacBean

Executive Director,
NB Alzheimer's Society



Biography

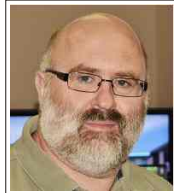
Chandra MacBean is proud to call herself the Executive Director of the Alzheimer Society of New Brunswick. Chandra started with the Alzheimer Society in 2004 as a summer research student, and quickly began her unexpected career working in the non-profit sector. She was hired by the ASNB to fill the provincial position managing the fund development and programs. After 4 years, Chandra became the Executive Director, and works hard to strategically transition the organization to plan for the increasing numbers of N.B. families who will be impacted by dementia in the coming years. She is passionate about the Alzheimer Society and the positive impact that the organization has on N.B. families living with dementia, and she strongly believes in the critical role that ASNB will continue to play as our population ages. Chandra obtained her graduate degree and taught on a part time basis at St. Thomas University.



DAY 1 – Thursday, November 14, 2013 – continued

Abstract

Established in 1986, ASNB is the only provincial organization dedicated to fighting Alzheimer's disease through its research program, its services to people with dementia and their families, and by providing a voice for thousands of families. The Society started as a volunteer organization with one office; in addition to the provincial office, we now operate resource centers in Fredericton, Moncton, Saint John, Edmundston and Miramichi. These Resource Centres and a Provincial Office provide information, support and education services for people with Alzheimer's disease or a related dementia, their caregivers and family, health professionals and the community.



New Brunswick Patient Voices Network

Dr. Michel Johnson

Assistant Professor, École de kinésiologie et de récréologie, Faculté des sciences de la santé et des services communautaires, Université de Moncton



Biography

Michel Johnson (Ph.D.) is an assistant professor at the École de kinésiologie et de récréologie at the Université de Moncton. His research focuses around health and safe driving, including the development of adaptive and inclusive technologies to reach an aging population in rural areas. Michel is also the principal investigator for both Atlantic Innovation Fund (AIF) and New Brunswick Health Research Foundation (NBHRF) grants investigating health and performance through biological signal processing.

Abstract

How can we better engage patients in healthcare? Patient Voices may provide part of the solution by creating a dynamic interaction between patients and policy makers. We will review the development and potential implementation in New Brunswick, discussing challenges and anticipated pilot projects.

1800 - 1900

UNB SAINT JOHN COCKTAIL RECEPTION



Welcome

Dr. Robert MacKinnon

Vice-President UNB Saint John



1900 - 2100
Marco Polo Room

AWARD GALA BANQUET

Young Health Researcher - 2013. Sponsored by:



Brent Korte

National Director, Government Affairs and Community Relations
Janssen Pharmaceutical Companies of Johnson and Johnson



Abstract

Brent Korte was appointed National Director of Government and Community Relations in early 2012. He is responsible for a cross-Canada team of market access professionals in public and private reimbursement as well as a community relations team that engages stakeholders and advocates in the Canadian marketplace. Brent holds a Bachelor of Physical Education degree with a major in Administration from the University of Alberta and resides in Spruce Grove, Alberta.



AWARD GALA

Banquet

of the
Young Health Researcher
in New Brunswick



November 14th, 2013
Saint John Trade and Convention Centre

2012-2013 Candidates



Dr. Sandra Turcotte



Dr. Tony Reisman



Dr. Rima Azar



Dr. Michel Johnson



Dr. Stacey Reading



Dr. Ann Beaton



Dr. Christopher Gray



Dr. Gilles Robichaud



Dr. Ted McDonald



Dr. Mathieu Bélanger



Dr. Stephen Lewis



Dr. Shelley Doucet

Welcome

The First Gala, together with the 5th Annual Conference on Health Research in New Brunswick, constitutes a unique opportunity to celebrate our successes, the hard work of our community and the support of our stakeholders in health research, the art of innovation. Not only does health research help to build a better health care system in New Brunswick, it is changing the face of New Brunswick. It inspires lives. This evening we recognize excellence and leadership.

Co-hosts:

The Honorable
David Alward
Premier of
New Brunswick

Ms. Roberta Clark
2013 Conference
President
Dr. Bruno Battistini
CEO, NBHRF

Mr. Brent Korte
National Director, Government Affairs and Community Relations
Janssen Pharmaceutical Companies of Johnson and Johnson

Dinner:

Fresh apple and beet root salad and seasonal greens
with crumbled gorgonzola cheese and apple cider vinaigrette
Prosciutto wrapped chicken stuffed with basil and asiago
with balsamic tomato sauce served with fried sugar
snap peas and yukon gold potato gratin

White chocolate amaretto cheesecake
Coffee and Tea

Jury Selection:

Dr. Pedro D'Orleans-Juste
2013 Jury President

Concluding Remarks:

Dr. Rodney Ouellette, Chair, NBHRF





DAY 2

Friday, November 15, 2013

<p>0730 - 0830 Loyalist Room</p>	<p>CONTINENTAL BREAKFAST</p>
<p>0830 - 0930 Marco Polo Room</p>	<p>PLENARY SESSION #4 – EFFECTIVE KNOWLEDGE TRANSLATION</p> <p>Keynote Speaker:</p> <div data-bbox="397 478 568 667"> </div> <div data-bbox="592 489 1307 525"> <p>The Integrated Model of Knowledge Translation – is it worth it?</p> </div> <div data-bbox="592 531 998 651"> <p>Dr. Carole A. Estabrooks Professor & Canada Research Chair (Tier I), Faculty of Nursing, and Professor (adjunct), School of Public Health, University of Alberta</p> </div> <div data-bbox="1198 562 1437 625"> </div> <div data-bbox="393 693 576 735"> <p>Biography</p> </div> <div data-bbox="592 693 1518 1060"> <p>Carole Estabrooks (Ph.D.) is Professor, Faculty of Nursing, at the University of Alberta, Edmonton, Alberta, Canada and a Canada Research Chair in Knowledge Translation. She is a fellow of the <i>Canadian Academy of Health Sciences</i> and of the <i>American Academy of Nursing</i>. She leads the Knowledge Utilization Studies Program (KUSP) at the University of Alberta. Dr. Estabrooks' applied health services research program focuses on knowledge translation in the health sciences. She studies the influence of organizations on the uptake of knowledge and the effects of that uptake on quality of care, quality of life/quality of end of life and quality of work life outcomes. Her work is primarily situated in the residential long term care sector and focuses increasingly on quality improvement and the spread and scale-up of innovation. Dr. Estabrooks is a past member and vice-chair of CIHR's Institute of Aging Advisory Board. She is appointed in the University of Alberta's School of Public Health, is affiliated with the University of Toronto's Nursing Health Services Research Unit, and is a co-investigator and member of two CIHR funded national teams – the <i>Canadian Dementia Knowledge Translation Network</i> and <i>KT Canada</i>. She teaches in the doctoral program and supervises graduate students and postdoctoral fellows. She holds a number of active research grants in the western provinces, Ontario and Europe. She has developed and continues to evaluate the <i>Alberta Context Tool</i> (ACT) currently in use in nine countries and six languages.</p> </div> <div data-bbox="393 1081 576 1123"> <p>Abstract</p> </div> <div data-bbox="592 1081 1518 1333"> <p>My longitudinal research program aims to develop solutions for improving the quality of care and quality of life/end-of-life for seniors living in nursing homes, for enriching the work life of their caregivers, and for enhancing system efficiencies and effectiveness. These seniors, the majority with a diagnosis of dementia, are arguably the most vulnerable Canadians living today. A key challenge facing us (and other applied health researchers and funders of such research), as we move work forward, is identifying and supporting effective models for conducting applied research so that it returns tangibly on the investment. The CIHR and other agencies have actively promoted an <i>integrated knowledge translation model</i>, most notably in their <i>Partnerships for Health System Improvement</i> funding mechanism. While this model, which we use, has been vigorously promoted in Canada, important questions about its requirements, cost and potential to motivate desired change need to be more forthrightly addressed.</p> </div>
<p>0930 - 1030 Montagu 2 & 3</p>	<p>CONCURRENT SESSION – WORKSHOP #3: CLINICAL RESEARCH</p> <p>Speaker:</p> <div data-bbox="397 1512 568 1701"> </div> <div data-bbox="592 1522 1193 1558"> <p>The Symbiosis of Clinical Research and Clinical Care</p> </div> <div data-bbox="592 1564 941 1684"> <p>Dr. Colleen O'Connell Staff Psychiatrist/Research Chief, Stan Cassidy Centre for Rehabilitation, Fredericton, NB</p> </div> <div data-bbox="1258 1575 1453 1732"> </div>



DAY 2 – Friday, November 15, 2013 – continued

Biography

Following a chemistry degree at St. Francis Xavier University, Colleen O'Connell (MD, FRCPC) completed medical school at Memorial University of Newfoundland and residency in Physical Medicine & Rehabilitation at Dalhousie University. She specializes in neuro-rehabilitation and is Research Chief at the Stan Cassidy Centre for Rehabilitation in Fredericton, with faculty appointments at Dalhousie and Memorial University's Faculty of Medicine and University of New Brunswick Faculty of Graduate Studies. She is a member of the Canadian ALS Clinical Trials and Research Network, The Rick Hansen Institute Research Network, and the Atlantic Mobility Action Project. Colleen is founder and chair of Team Canada Healing Hands, a not-for-profit organization dedicated to advancing rehabilitation in developing countries, and has worked in areas of care delivery, training, and research throughout the world. She is co-chair of the CAPM&R Special Interest Group on International Health, is a member of the Disaster Committees of the International Spinal Cord Society and ISPRM, and is co-author of numerous publications on disaster, including issues of amputation and spinal cord injury in the humanitarian field.

Abstract

Over the past decade, the Stan Cassidy Centre has grown its research capacity through participation in national and international clinical trials, registries, and applied research. Building partnerships with University of New Brunswick's Institute for Biomedical Engineering has resulted in collaborations on projects for evaluating biometric data and exoskeletal mobility in persons affected by neurological injuries. Through unique strategies of outreach visits and telehealth, patients from around the province have participated in a variety of clinical studies. The opportunity for participation in research activity provides patients with benefits beyond those that may be realized from the potentially therapeutic intervention alone. Similarly, the skills and experience that clinicians gain from research engagement positively impacts clinical care. The mutual benefit is reflected in the ongoing activity at the centre, in a symbiotic relationship of research and care.

0930 - 1030
Marco Polo
Room

**CONCURRENT SESSION – WORKSHOP #4:
CARDIOVASCULAR RESEARCH IN NEW BRUNSWICK – FROM THE BENCH-TOP TO THE BEDSIDE**

Speaker:



Dr. Ansar Hassan

Cardiac Surgeon, Department of Cardiac Surgery,
New Brunswick Heart Centre, Saint John, NB



Biography

Born and raised in Montreal, Quebec, Ansar Hassan (M.D., Ph.D.) obtained his medical school degree from McGill University in 1998. Following this, he went to Dalhousie University in Halifax, Nova Scotia where he completed his residency in cardiac surgery. During his residency training, he acquired a PhD in social and clinical epidemiology under the supervision of Dr. Gregory Hirsch and Dr. Paul Veugelers. In 2007, after having successfully defended his Royal College of Physicians and Surgeons examination, he travelled to Greenville, North Carolina to embark on a fellowship under the tutelage of Dr. Randolph Chitwood, the world's leader in robotic and minimally invasive cardiac surgery. There, he learned the art of robotically- and videoscopically-assisted valve repair and replacement surgery. Since 2009, Dr. Hassan has been a member of the Department of Cardiac Surgery at the New Brunswick Heart Center, where in addition to his many clinical responsibilities, he has played an active role in the creation of the Cardiovascular Outcomes Research Institute (CORI) of New Brunswick.

Abstract

The Cardiovascular Outcomes Research Institute of New Brunswick – CORINB – was established in an effort to develop and support clinical outcomes and translational research in the field of cardiovascular diseases. To date, numerous retrospective and prospective clinical research studies have been conducted at CORINB to evaluate existing cardiovascular treatment and intervention strategies and to determine the processes of care that are most likely to result in the best cardiovascular outcomes for all New Brunswickers. CORINB has grown considerably since its inception in 2010, providing numerous scientific opportunities for clinicians at the New Brunswick Heart Centre while hosting educational opportunities for medical students at the Dalhousie Medical New Brunswick (DMNB) and fostering collaborative potential for the newly appointed cardiovascular basic scientists at DMNB. The purpose of this workshop is to highlight some of the research activities being carried out at CORINB and to demonstrate how cardiovascular research may be carried out from the bench top to the bedside.

1030 - 1100

NUTRITION BREAK, POSTER VIEWING & JUDGING



DAY 2 – Friday, November 15, 2013 – continued

1100 - 1230
Montagu 2 & 3**CONCURRENT SESSION – WORKSHOP #5:
SCIENTIFIC PRESENTATIONS BY NEW BRUNSWICK RESEARCHERS****Moderator: Dr. Bruce MacDonald**, Associate Dean of Graduate Studies, UNB Saint John**Speakers:****Effectiveness of a Wide-Scale Community-Based Intervention
for Preschoolers with Autism Spectrum Disorders****Dr. Barb D'Entremont**
Director of Clinical Training,
Psychology Department of UNB**Abstract**

Evidence supports the efficacy of early intensive behavioural intervention (EIBI) based on principles of applied behavior analysis for improving the outcomes of children with autism spectrum disorders (ASD; e.g., Howard, Sparkman, Cohen, Green, & Stanislaw, 2005; Lovaas, 1987; McEachin, Smith, & Lovaas, 1993). Studies on the effectiveness of community-based programs, however, are limited. The current presentation will report on the preliminary efforts to evaluate the effectiveness of New Brunswick's EIBI services for preschoolers.

**Neuro-Biomechanical Factors in the
Design of Assistive Technologies****Dr. Chris McGibbon**
Professor, Kinesiology & Institute
of Biomedical Engineering, UNB**Abstract**

Mobility limitations are the most common contributor to disability in the Canadian adult population. Conventional assistive technologies for walking range from canes & walkers, to passive orthotic and prosthetic devices. Although they can meet some needs of users, their rehabilitative potential is very low; they only compensate for functional loss, rather than restoring function. A new era of assistive technologies is emerging that has the ability to address this critical gap in mobility rehabilitation. This talk will discuss this growing area and the new challenges it presents to researchers and health care professionals.

**Exploring Nurses' Experiences of Technology Integration:
Co-constructed Narratives about Education & Training****Ms. Karen Furlong, PhD (c)**
Senior Teaching Associate, Nursing &
Health Sciences, UNB Saint John**Abstract**

My doctoral research uses narrative inquiry to explore how nurses learn to use an Electronic Health Record. Co-constructed narratives suggest that learning behaviours are significantly influenced by historical ways of being and a concern with how the technology influences patient-care delivery. Based on this inquiry, it is evident that the nurses knew very little about what they needed to know or how to prepare themselves to work within technological environments. A key finding is that learning must include both education (understanding workflow adjustments) and hands-on training (system use).

**The HEALTH Study: Improving the health-related
fitness of obese adults living in urban and rural
New Brunswick communities****Dr. Stacey Reading**
Associate Professor, Kinesiology, UNB



DAY 2 – Friday, November 15, 2013 – continued

Abstract

The Healthy Eating Active Living for Today's Health (HEALTH) Study is a community-based 6 month physical activity (PA) and nutritional counselling intervention to help adults with class I & II obesity better manage their condition. We tested the hypothesis that similar health-related fitness (HRF) improvements would be measured among participants receiving the intervention in an urban (>70,000) or rural (<15,000) community setting. Although the intervention does not cure obesity, the intervention was a cost-effective way to deliver community-based physical activity programming that successfully created a healthier obese phenotype.

1100 - 1230
Montagu 1

**CONCURRENT SESSION – WORKSHOP #6:
SCIENTIFIC PRESENTATIONS BY NEW BRUNSWICK HEALTH RESEARCHERS**

Moderator: Dr. Shelley Doucet, Assistant Professor, Department of Nursing & Health Sciences, UNB Saint John, and Adjunct Professor, Faculty of Medicine, DMNB

Speakers:



Cholinergic Receptors: New Molecular Targets for Immune Regulation

Dr. Alain Simard

Assistant Professor, Dept. of Chemistry & Biochemistry,
Faculty of Sciences, Université de Moncton



Abstract

A little over a decade ago, it was discovered that the central nervous system (CNS) could control peripheral inflammation by means of the cholinergic system. We have recently demonstrated that this 'cholinergic anti-inflammatory pathway' can delay the onset and reduce the severity of disease in a mouse model for Multiple Sclerosis by regulating immune cell production, function and recruitment to the CNS. The objective of our current program is to gain a better understanding of how the cholinergic system modulates inflammation. This research could provide new targets for the treatment of MS and other inflammatory diseases.



Molecular Matchmaker: Mating Hydroxamate Warhead Lasso Peptoids to Histone Deacetylase as an Anti-Breast Cancer Strategy

Dr. Adrian Culf

Research Scientist, ACRI; Adjunct Professor,
Mount Allison University & Université de Moncton



Abstract

The eleven zinc-centred HDAC isoenzymes have emerged as targets for epigenetic cancer therapy with HDAC inhibitors possessing structural similarity to the N-acetyl-lysine natural substrate. A bacterial cyclic peptide with this motif, romidepsin, is an approved treatment for cancer (lymphoma) and displays tight binding in the low nanomolar range. We present the current status of our work in the areas of automated peptoid synthesis (N-substituted glycine oligomer), macrocyclization for 9 to 15 atom rings, lead identification, molecular modelling, in vitro recombinant enzymatic and cellular activity of hydroxamate lasso cyclopeptoids. Funding is kindly provided by CBCF and NBHRF. Also involved in this research: Miroslava Cuperlovic-Culf (National Research Council of Canada, Moncton, NB) and Vett Lloyd (Mount Allison University, Sackville, NB).



Arginine Methylation Regulates – Cytoplasmic Functions of Heterogeneous Nuclear Ribonucleoprotein A1

Dr. Michael Wall

Postdoctoral Fellow, ACRI



Abstract

Arginine methylation is an important protein modification that can affect many aspects of cell biology. The protein heterogeneous nuclear ribonucleoprotein A1 (hnRNP A1) is a major target for this modification, but little is understood about its functional role. I am interested in studying how dysregulation of hnRNP A1 cytoplasmic activity has an impact on cancer and my research is currently focused on discovering the mechanistic role of arginine methylation in regulating hnRNP A1 function.



DAY 2 – Friday, November 15, 2013 – continued



Control of the Expression of 5-Lipoxygenase: An Important Enzyme in Inflammation and Disease

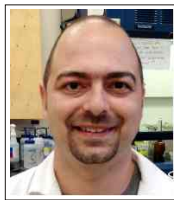
Mr. Samuel Poirier, PhD (c)

Department of Chemistry & Biochemistry,
Faculty of Sciences, Université de Moncton



Abstract

5-lipoxygenase (5-LO) is an enzyme expressed in leukocytes whose products are important for innate immune responses. 5-LO catalyzes the conversion of the polyunsaturated fatty acid, arachidonic acid, into leukotrienes which are biologically-active lipid mediators of inflammation. It is now apparent that the 5-LO pathway plays a significant role in diseases with an inflammatory component such as asthma, atherosclerosis and cancer. The aim of this project is to better elucidate the mechanisms by which 5-LO is regulated in human leukocytes.



Is Unsaturated Fatty Acid Metabolism a Therapeutic Target For Proliferative Disorders?

Mr. Philippe-Pierre Robichaud, PhD (c)

Department of Chemistry & Biochemistry,
Faculty of Sciences, Université de Moncton



Abstract

Fatty acid metabolism in transformed malignant cells is greatly altered as a mechanism to allow rapid cell proliferation, however little is known in this regard in non-transformed cells. In this study, we show that the cellular fatty acid composition was greatly modified following the activation of primary human T cells. These modifications were associated with significant changes in the expression of several enzymes implicated in fatty acid and glycerophospholipid metabolism that have not been previously associated with cell proliferation. We postulate that the expression of genes coding for these enzymes is required for cell proliferation.

1230 - 1400
Loyalist Room

BUFFET LUNCH, POSTER VIEWING, DISCUSSION & JUDGING

1400 - 1530
Marco Polo Room

PLENARY SESSION #5 – TRAINING AND MENTORING STUDENT PRIZES

Moderator: Professor Roberta Clark

Associate Professor Department of Nursing & Health Sciences and
Assistant Dean of Health Research & Partnerships, UNB Saint John



Poster Presentations – Student Awards

- 3 per Category: (1) Postdoctoral Fellows
(2) PhD (c)
(3) Health Professionals, MSc Students and Undergraduates
(4) Medical Students

10 minute oral presentation for each poster selected in each category

1530 - 1545
Marco Polo Room

CLOSING ADDRESS

Dr. Rodney Ouellette

Chair of NBHRF Board of Directors;
and President & Scientific Director of ACRI

